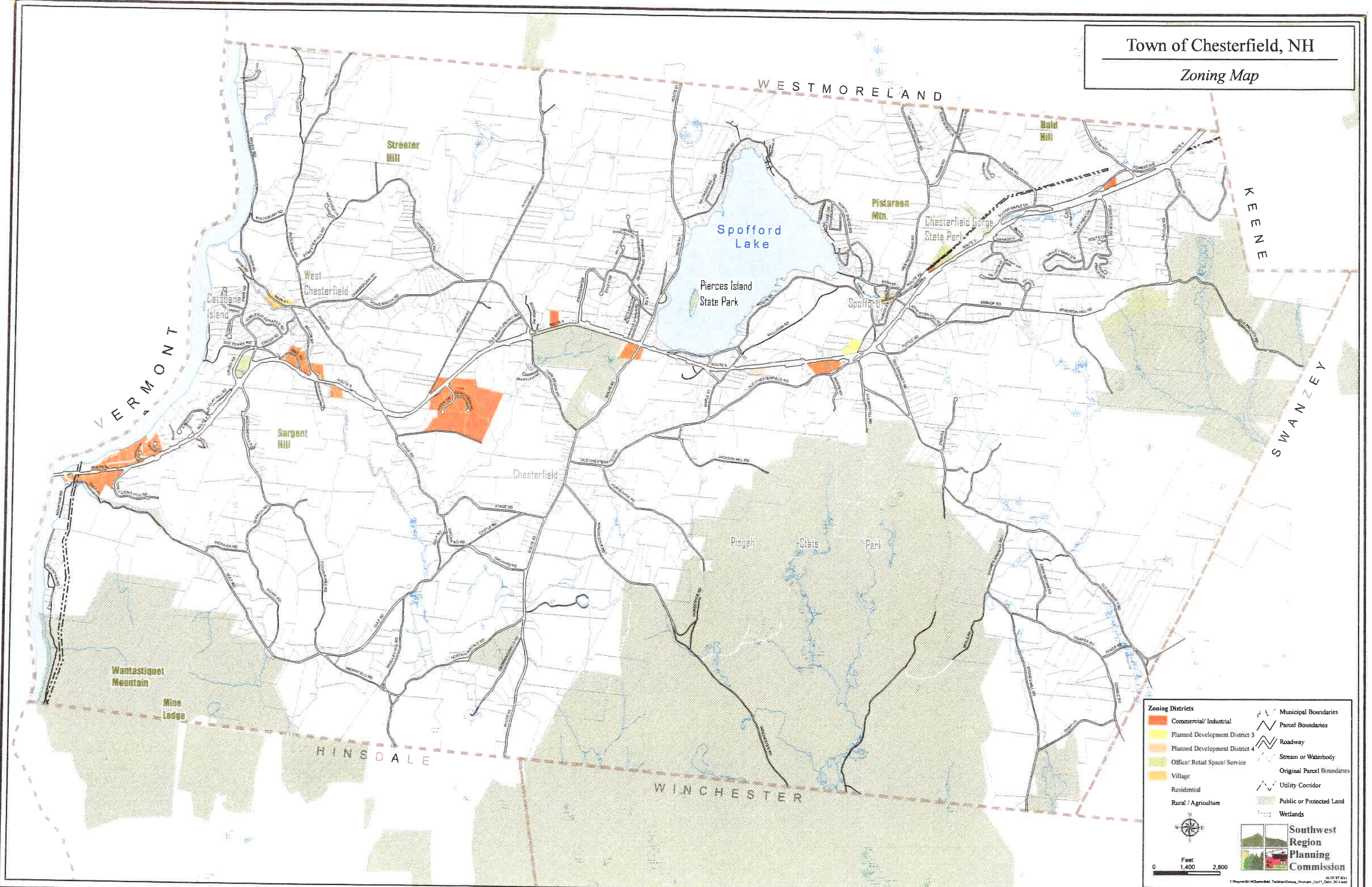


Town of Chesterfield, NH

Zoning Map



Zoning Districts

- Commercial/Industrial
- Planned Development District 3
- Planned Development District 4
- Office/ Retail Space/ Service
- Village
- Residential
- Rural / Agriculture

Other Features

- Municipal Boundaries
- Parcel Boundaries
- Roadway
- Stream or Waterbody
- Original Parcel Boundaries
- Utility Corridor
- Public or Protected Land
- Wetlands

0 Feet 1,400 2,800

Southwest Region Planning Commission

AL03172011
V:\Projects\2011\Chesterfield\Task\Map\Zoning_Ordinance_11\17_Chesterfield_Zoning_Map_11.mxd