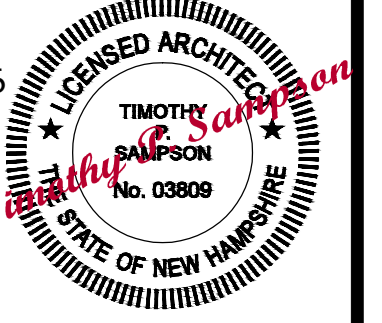


These drawings are LIMITED SCOPE and are intended only to describe general design intent, scale, overall spatial relationships and material where indicated. These drawings shall be considered preliminary for purposes of design review, comment, or budget pricing only, unless expressly released for other purposes as indicated in the issue log. The architect assumes responsibility for errors in the information provided, and not for omissions.

Architect:
Timothy Sampson
 NCARB, LEED AP
 103 Roxbury Street
 Suite 206
 Keene, NH
 603 769 7736



Engineer:
 .

© SAMPSON ARCHITECTS
 2019 WOF#19-050

Prepared For
Lyle Foley and Bill Manter
 873 Route 63
 Spofford, NH 03462

PROJECT
Proposed Residence
 873 Route 63
 Spofford, NH 03462

TITLE
**First Floor Plan
 Front Elevation**

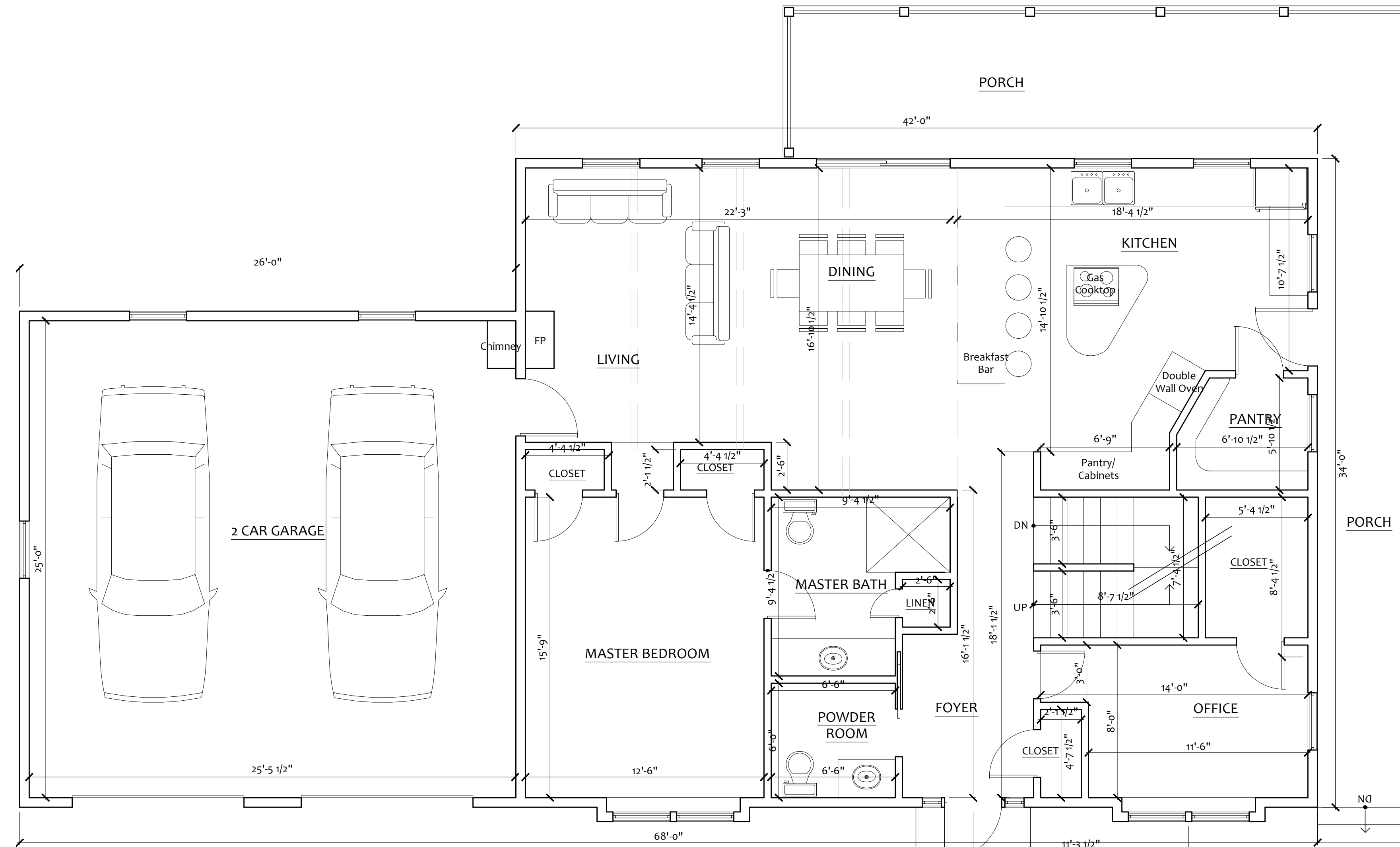
Date:	Revisions:
9.16.20	ZBA Submission
-	-
-	-

SCALE 1/4"=1'-0"

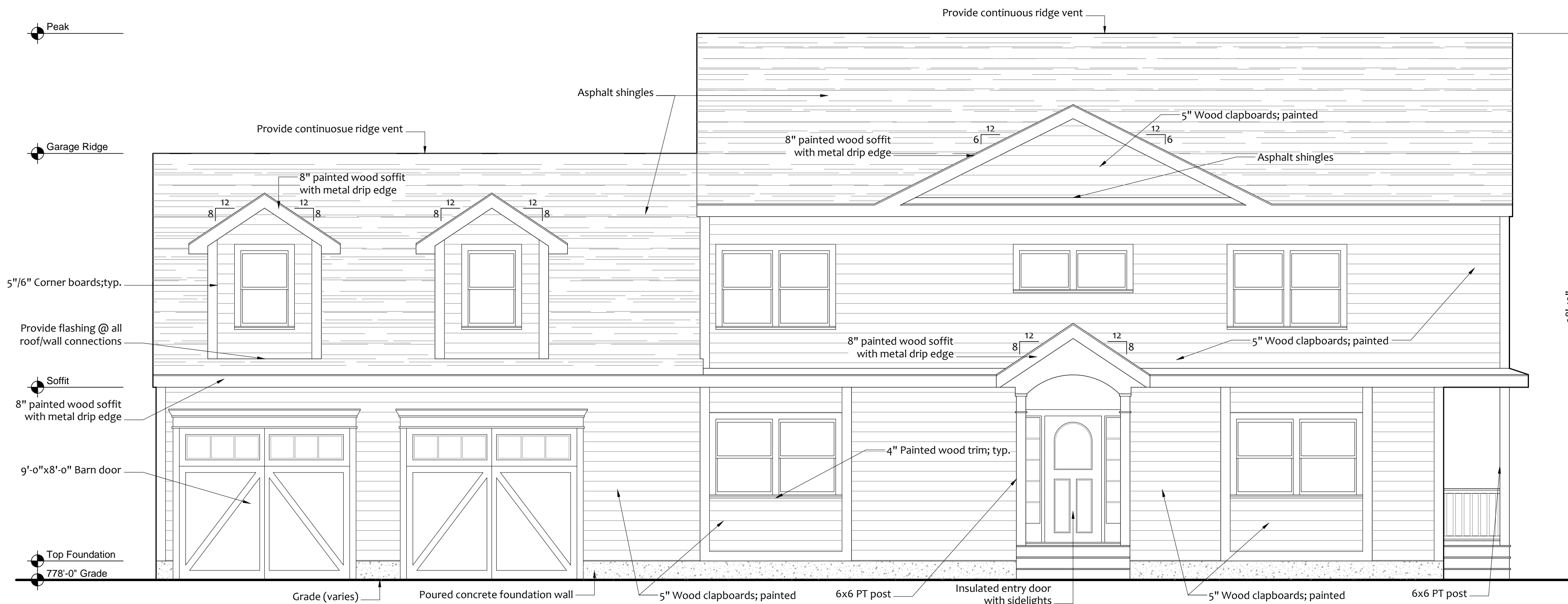
DATE 9.16.20

SHEET NUMBER

A2



○ First Floor Plan



○ Front Elevation

A

B

C

D

1

2

3

4

5

6